



## Specs:

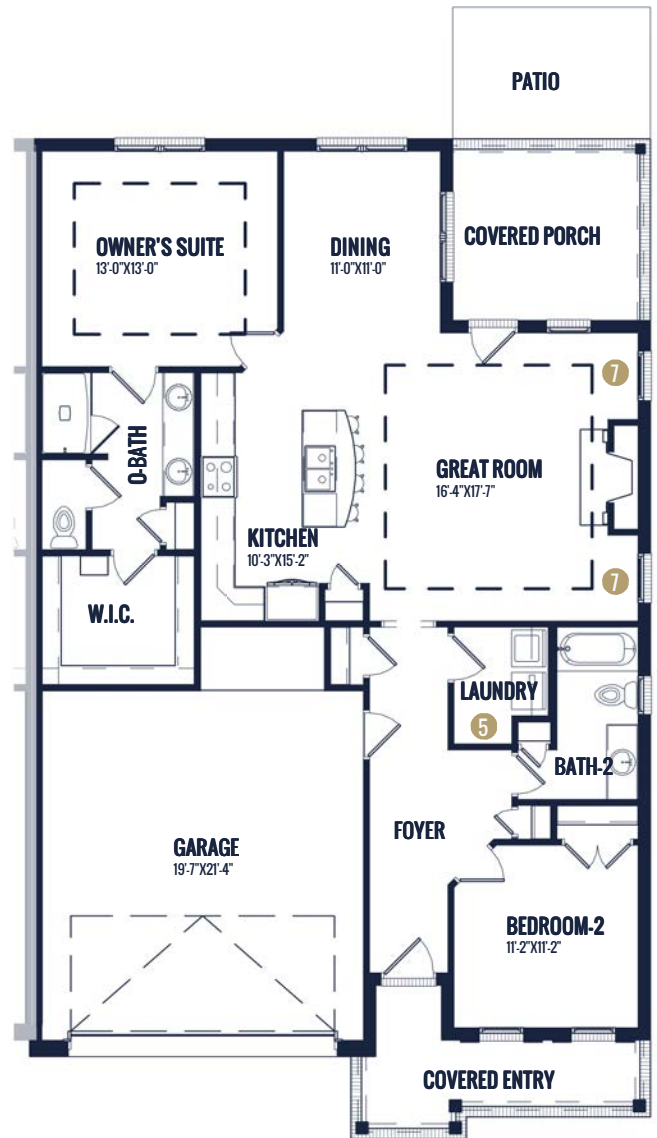
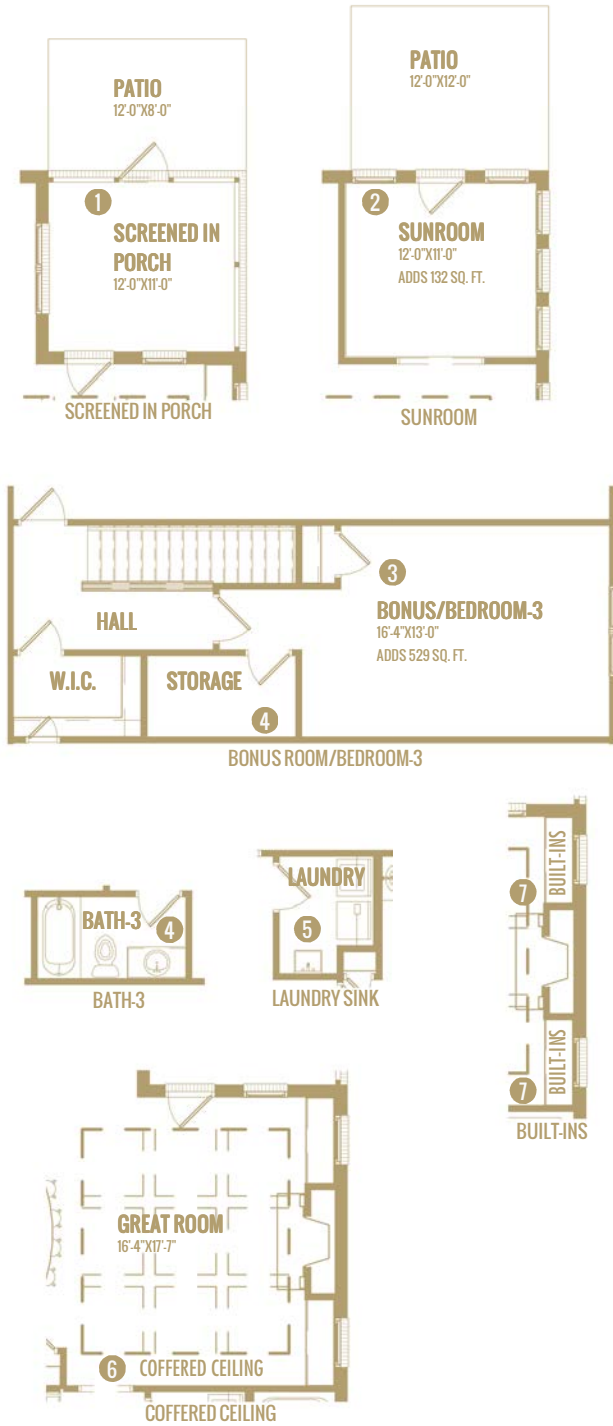
Bedrooms: 2 -3  
 Bathrooms: 2 -3  
 Square Footage: 1,443 Sq.Ft.  
 Width: 37' - 4 3/4"  
 Depth: 60' - 8"

## Options Shown:

- 1 Screened in Porch
- 2 Sunroom (Adds 132 Sq.Ft.)
- 3 Bonus/Bedroom-3 (Adds 529 Sq.Ft.)
- 4 Bath-3
- 5 Laundry Sink
- 6 Coffered Ceiling
- 7 Built-ins

Watercolors, illustrations, and floor plans are for marketing purposes only and are subject to change at builder's discretion. Square footage is outside veneer and should be independently verified. This is not a legal document.  
 12/4/2023 11:51:18 AM

# FLOOR PLAN: CARA CLASSIC



**MAIN LEVEL FLOOR PLAN**

Watercolors, illustrations, and floor plans are for marketing purposes only and are subject to change at builder's discretion. Square footage is outside veneer and should be independently verified. This is not a legal document.  
12/4/2023 11:51:20 AM